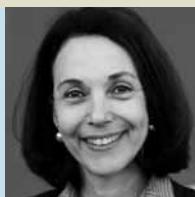


MEET THE CANDIDATES IN APA'S

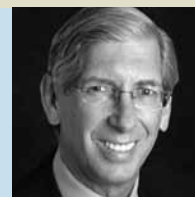
2012 ELECTION



Renée L. Binder, M.D.
www.ReneeBinder.com



Mary Helen Davis, M.D.
www.mhdavis4apa.com



Jeffrey Lieberman, M.D.
www.LiebermanforAPA.com

President-Elect

Treasurer



David Fassler, M.D.
www.davidfassler.com



Robert Feder, M.D.
No Web site

To help APA members select the candidates they believe are best qualified for office, candidates' biographical and position statements will be posted online and accessible from the online ballot. A booklet containing the same information will be mailed with paper ballots.

There are 19 candidates vying for national and Area office in this year's election. Here are their photos and Web site addresses for those with a personal candidate Web site. Ballots will be e-mailed on **January 3** to all APA voting members with a valid e-mail address on file with APA.



Anita Everett, M.D.
No Web site



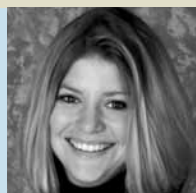
Bruce Hershfield, M.D.
No Web site

Trustee-at-Large

Early Career Psychiatrist Trustee-at-Large



Steve Koh, M.D., M.P.H., M.B.A.
www.stevkohmd.com

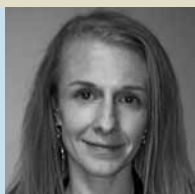


Molly McVoy, M.D.
No Web site

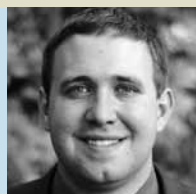


Jose P. Vito, M.D.
www.josevito.com

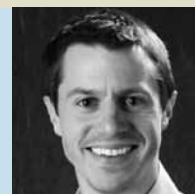
Member-in-Training Trustee-Elect



Andrea Brandon, M.D.
www.apamitte.weebly.com/
andrea-brandon-md-phd.html

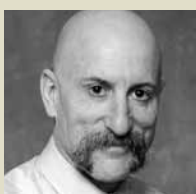


Brian Hurley, M.D., M.B.A.
www.apamitte.weebly.com/
brian-hurley-md-mba.html

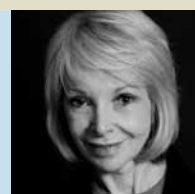


Erik Vanderlip, M.D.
www.apamitte.weebly.com/
erik-vanderlip-md.html

The remaining members will be mailed a paper ballot. The deadline for replacement ballot requests is **January 24**. The deadline for online voting and receipt of paper ballots is 5 p.m. Eastern Standard Time on **January 31**.



Jeffrey Geller, M.D., M.P.H.
www.jeffreygellermd.info



Gail Robinson, M.D.
www.gailrobinson.ca

Area 1 Trustee

Area 4 Trustee



Ronald M. Burd, M.D.
www.rburd.net



Judith Kashtan, M.D.
No Web site

APA members wishing to campaign on behalf of a candidate should review the APA Election Guidelines. They are posted at <www.psych.org/Resources/Governance/Elections/Election-Guidelines.aspx?FT=.pdf>.

Those with comments or questions about the election should e-mail them to election@psych.org.

Area 7 Trustee



Jeffrey Akaka, M.D.
www.jeffreyakaka.com



Annette M. Matthews, M.D.
No Web site